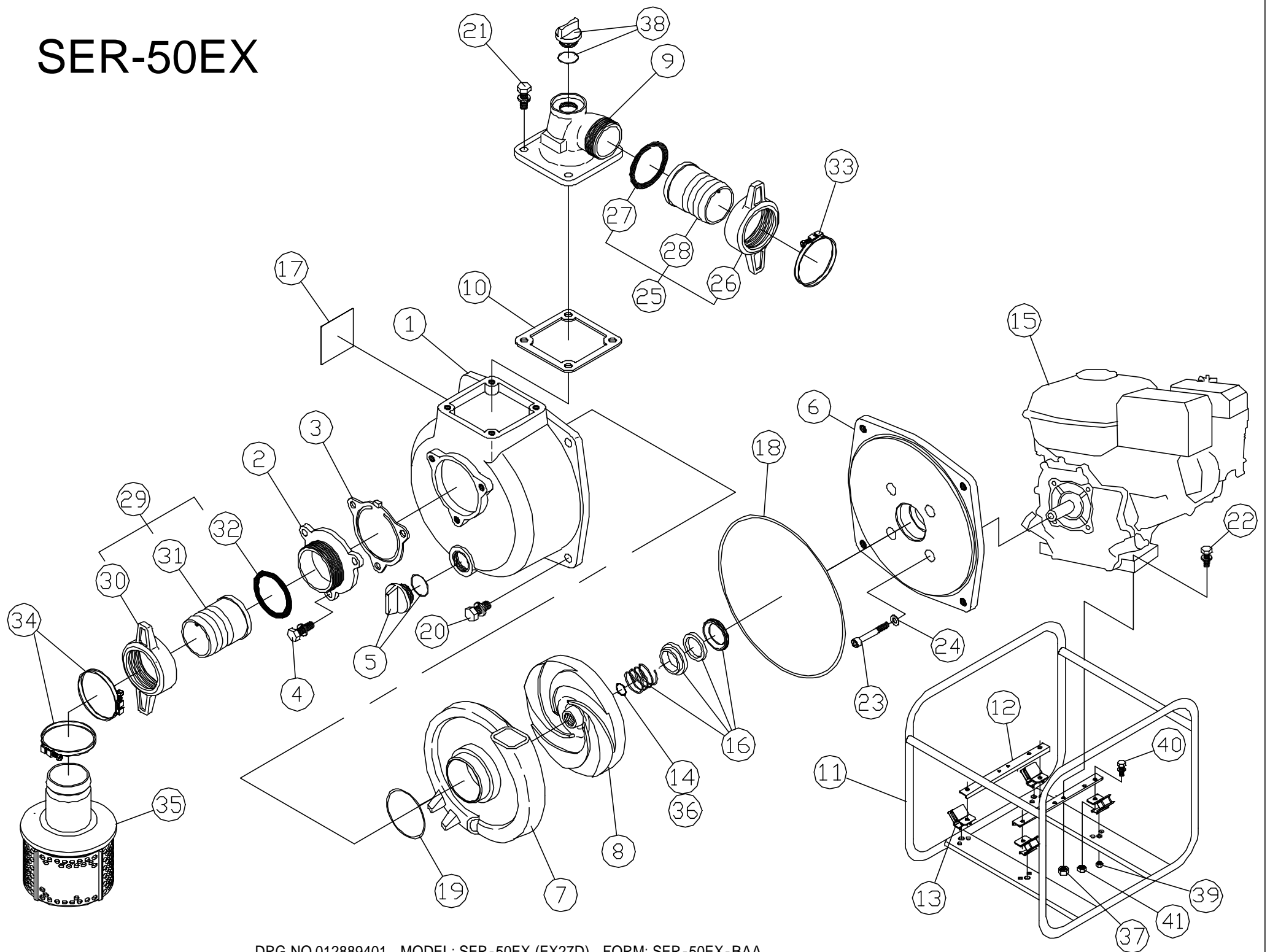


SER-50EX



DRG NO.012889401 MODEL: SER-50EX (EX27D) FORM: SER-50EX-BAA

	PARTS CODE	PARTS NAME	QTY	MATERIAL	SIZE	REMARK
1	0114184	PUMP CASING	1	ADC		
2	0114004	SUCTION FLANGE	1	ADC		
3	0112799	CHECK VALVE	1	NBR		
4	743119061	HEXAGON BOLT	3	SWRM	M10X25	
5	0118079	25A PLUG SET	1			
6	0110722	FLANGE BRACKET	1	ADC		
7	0112819	VOLUTE CASING	1	FC		
8	0112862	IMPELLER	1	FC		
9	0114209	DELIVERY FLANGE	1	ADC		
10	0110584	DELIVERY FLANGE PACKING	1	CR		
11	0117950	BASE SET	1		NO.66	
12	0120338	ENGINE BASE	2	SPC		
13	0116172	CUSHION RUBBER	4			
14	0110081	IMPELLER ADJUSTING WASHER	3	BSP		
15	0120251	ENGINE	1	ROBIN EX270D		
16	0110862	MECHANICAL SEAL	1		20	
17	0120252	NAME PLATE	1	TFILM		
18	0115016	O-RING	1	NBR	1517-51.5	
19	0113989	O-RING	1	NBR	P74	
20	743119078	HEXAGON BOLT	4	SWRM	M12X30	
21	743119063	HEXAGON BOLT	4	SWRM	M10X30	
22	743119067	HEXAGON BOLT	4	SWRM	M10X40	
23	734532076	HEXAGON SOCKET BOLT	4	SCM	M8X60	
24	854255008	SEAL WASHER	4		8	
25	0117026	COUPLING SET	1	PS SCREW	50MM	
26	0113390	COUPLING	1	ABS	50MM	
27	0113391	COUPLING PACKING	1	NBR	50MM	
28	0110356	HOSE NIPPLE	1	ABS	50MM	
29	0118017	COUPLING SET	1	PS SCREW	65MM	
30	0110365	COUPLING	1	AC	65MM	
31	0110366	HOSE NIPPLE	1	ABS	65MM	
32	0110367	COUPLING PACKING	1	NBR	65MM	
33	940019060	HOSE BAND	1		60	
34	940019080	HOSE BAND	2		80	
35	0118046	STRAINER SET	1	PP		
36	0113016	IMPELLER ADJUSTING WASHER	2	BSP		
37	827419010	HEXAGON NUT	4	SWRM	M10	
38	0118078	20A PLUG SET	1			
39	842319008	M8 SPRING NUT	4	SWRM	M8	
40	743119076	HEXAGON BOLT	4	SWRM	M12X25	
41	827419012	HEXAGON NUT	4	SWRM	M12	